

# STOBER Drives Limited

## A Brief History Of STOBER



## A Brief History of STÖBER

In 1934 a mechanical workshop was set up by Paul and Wilhelm Stober, who wanted to see their ideas come to life and to perfect imperfections in mechanical designs.

This spirit lives on in STÖBER today.

In 1943 the variable speed drive developed by STÖBER was launched.

Towards the end of the 1970s, Bernd Stober, a technical director from the 2nd generation of the Stober family, realised the growing importance of electric speed adjustment for drive technology.

He introduced this new technology into the company. Soon afterwards frequency inverters, servo controllers and the corresponding software by STÖBER set new standards in this industrial sector.

A compatible MGS geared motor system was then launched in 1990/91. This modular design, along with the machining of closed housings in one clamping, was a revolution in quality within the industrial sector.

Continuing the founders' tradition of improving and optimising solutions, the SMS servo modular system was introduced in 1993.

STÖBER was the first supplier in the world to directly mate dynamic servo-motors with high-precision planetary gearing and customers enjoyed reduced weight, space and cost benefits.

As the innovation in new products continued, STÖBER expanded its international presence and in 1991 an important step was taken towards a globally operating company with the establishment of a new subsidiary company with its own assembly plant in Kentucky, USA.

Since the beginning of the new millennium, STÖBER has been managed by the 3rd generation of the Stober family, Andreas Thiel and Patrick Stober.

Under their direction, continued product development has helped mould STÖBER into a system supplier for the entire machine automation sector. From the machine shaft to the control level, STÖBER's customers benefit from a complete automation solution that is designed to meet their specific requirements.

Since 2000, the company has twice expanded its production capacity, and investment in new building helps them to meet the continuously growing demand for STÖBER products.

In 2014 the mark of 100,000,000 Euros was passed for the first time and further sustainable growth can be expected in the future



1943

## Variable Speed Gear Units

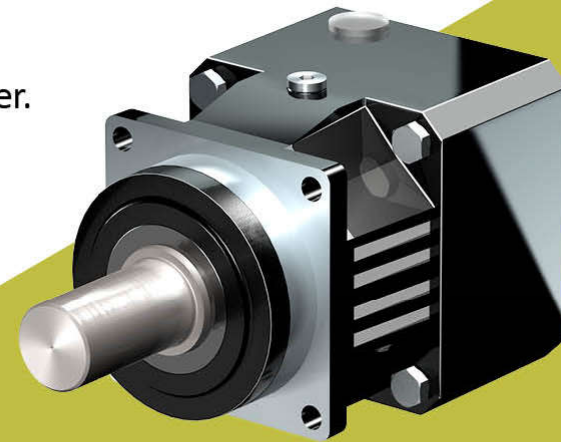
The Stöber brothers establish Gebr. Stöber Maschinenfabrik and develop a variable-speed drive which revolutionizes production operations.



STÖBER

## 1980 -1990 STÖBER Electronics and Planetary Gear Units

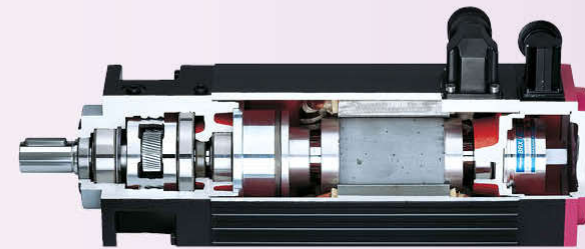
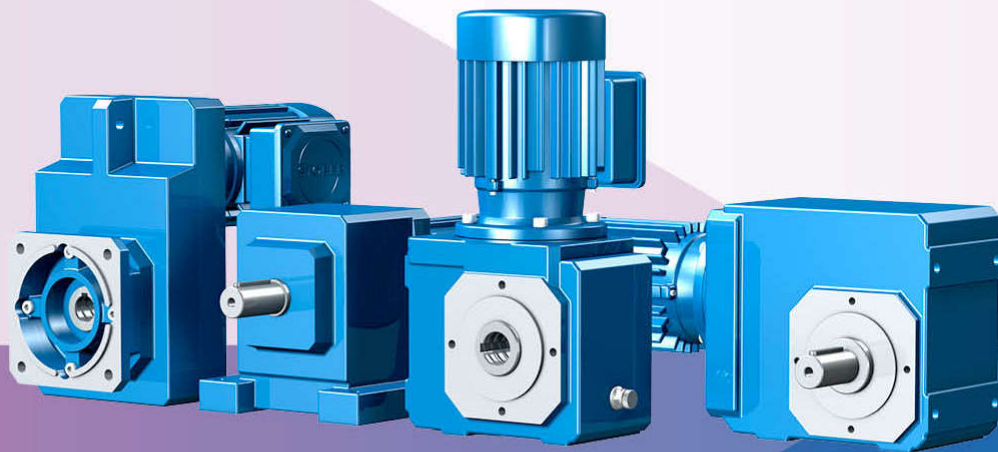
Expansion of the product portfolio  
with the first STÖBER drive controller.  
The planetary gear units become  
established on the market.



**STÖBER**

## 1990 MGS Geared Motors

**-2000** STÖBER develops the modular MGS geared motor system and integrated synchronous servo geared motors.

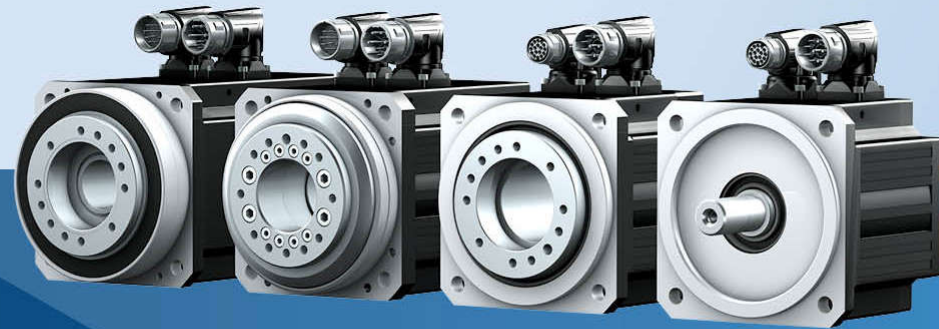


**STÖBER**



**2000  
-2010** SDS 5000 Servo Inverters  
EZ, EZF, EZHP and EZHD Synchronous  
Servo Motors

STOBER expands its product portfolio with the powerful POSIDYN® SDS 5000 servo inverter and extremely compact synchronous servo motors for screw drives and with flange hollow shaft.



**STOBER**

## 2010 -2015 MC6 Motion Controller with SD6 Drive Controller

STOBER sets the standard for motion control from one source. Drive control and drive technology merge into one modular software and hardware system.



# STOBER

## 2010 -2015 ZR, ZTR, ZTRS and ZV Rack and Pinion Drives

An innovative system concept for rack and pinion drives. ZTRS makes it possible to use the full gear torque with a bolted supporting bearing holder for the first time in a rack and pinion drive.



**STÖBER**



2016

## SI6 Drive Controllers in Multi-Axis Drive Systems

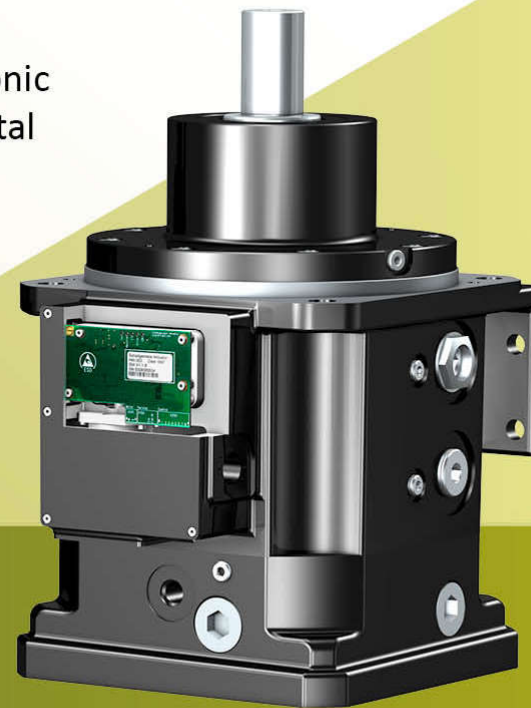
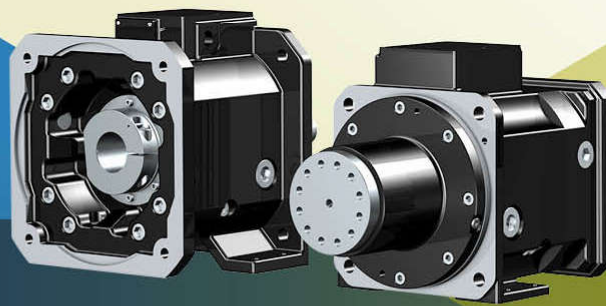
With a width of just 45 mm, the SI6  
drive controller is the most compact  
solution on the market.



**STÖBER**

## 2017 PS Two-Speed Gearboxes with SensorShift

STOBER combines the mechanical and electronic system in the PS two-speed gearbox with digital switch control SensorShift.



**STOBER**

## 2017 LeanMotor with SC6 Drive Controller

A world first! Regulation of speed and torque at low speeds and when stalling without using any position sensor elements in the motor.



**STÖBER**



2018

## SE6 Safety Module

Expansion of STÖBER safety technology with the SE6 safety module for the SD6 drive controller. A practical and highly flexible solution with a huge range of functions.



**STÖBER**



Find out more...

## For More Information

STOBER - Decades of Innovative Drive Technology.

STOBER is a family owned company that was founded in Pfrozheim,  
Germany in 1934.

As a service oriented worldwide system provider, STOBER is one of the  
innovators in Digital Drive Technology.

To find out more, visit the STOBER website at [www.stober.co.uk](http://www.stober.co.uk),  
or call 01543 458858 now.

